



GOOD MORNING
Have Good Trading Day

THURSDAY



Price is what you pay.
Value is what you get.

- Warren Buffet



MARKET PULSE

INDIAN INDICES

NAME	CMP	NET CH.	%
SENSEX	28059	+69	+0.25
NIFTY	8650	+17	+0.21

INDIAN ADR'S

SYMBOL	CLOSE	GAIN/ LOSS %
DRREDDY	45.36	-0.33
HDFCBANK	71.58	+0.96
ICICIBK	7.27	-1.76
INFY	16.39	-0.91
TATAMOTOR	37.18	-1.56
WIPRO	10.60	-1.40

FII AND MF ACTIVITY

SYMBOL	In Crs.
FIIs Eq (Provisional)	-39.28
FIIs Index Future	-254.55
FIIs Index Options	1083.97
FIIs Stock Future	371.82
FIIs Stock Options	-82.61
DIIs Eq (Provisional)	129.18

CURRENCY

RBI RATE	24-AUG-2016
RUPEE - \$	67.1320
EURO	75.8055
YEN 100	66.9000
GBP	88.3860

MARKET PULSE

GLOBAL INDICES

NAME	CMP	NET CH.	%
DOW	18481	-65	-0.35
NASDAQ	5217	-42	-0.81
NIKKEI	16555	-42	-0.25
HANG SENG	22798	-22	-0.10
SGX NIFTY	8674	+19	+0.22

WORLD COMMODITIES

FUTURE	U\$\$	CHANGES
CRUDE	46.76	-0.01
NATURAL GAS	2.832	-0.003
GOLD	1328.9	-0.8
SILVER	18.540	-0.016
COPPER	2.0945	+0.0045

WORLD EVENTS

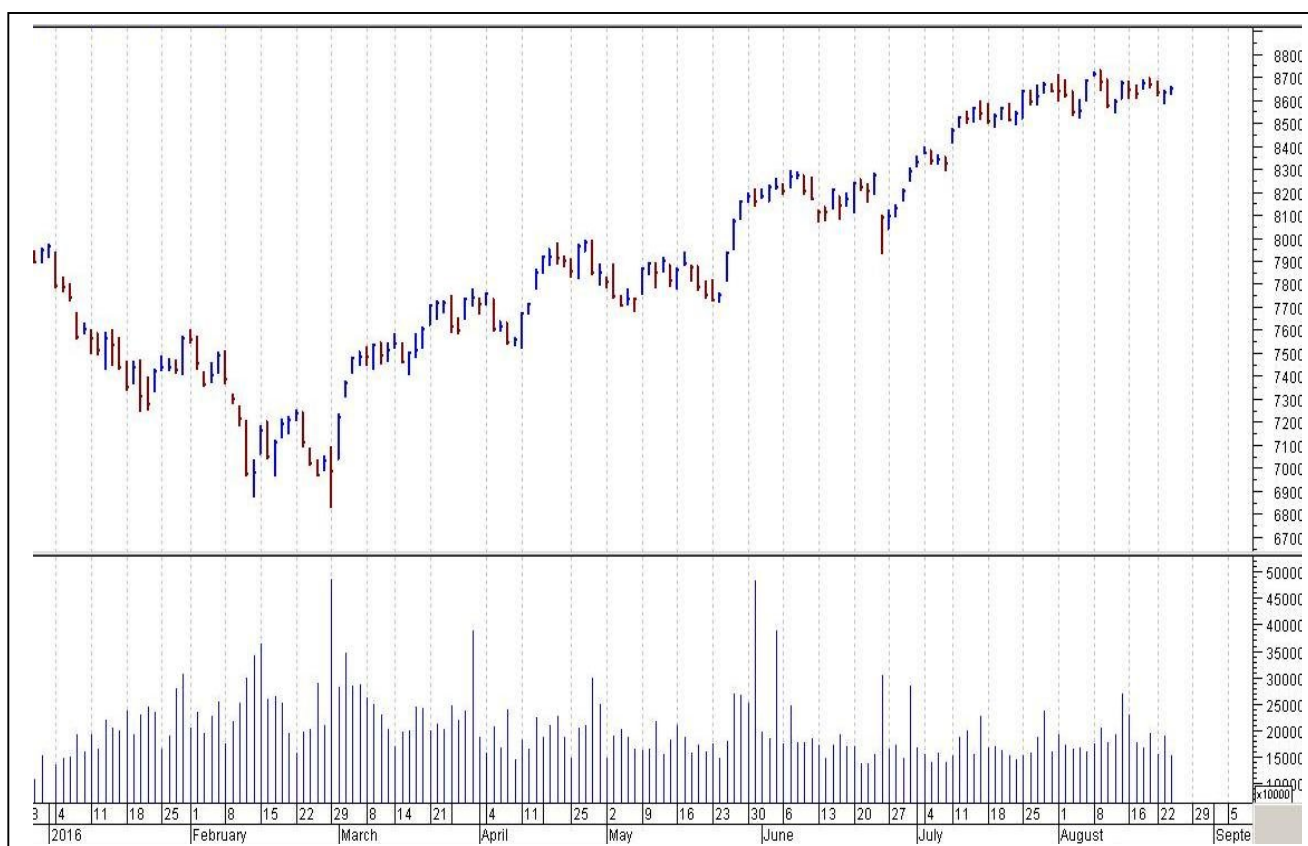
- US: Core Durable Goods Orders m/m
- Unemployment Claims
- UK: CBI Realized Sales

TOP STORY

- Ramco Systems Singapore subsidiary bags order from one of the top 5 most valuable global brands.
- Tata global beverage looks to enter dairy business
- Monsanto withdraws new GM cotton seed from India
- Astrazeneca Pharma Termination of distribution arrangements for Meronem in India
- IIFL Holdings Approved merger of IIFL Facilities Services Ltd and IIFL Properties Pvt Ltd
- Century Plyboards Completed disinvestment of Singapore subsidiary company
- Infinite Computer Solutions Board approves buyback of shares up to Rs 150cr at maximum price of Rs 250 per share. Promoters to participate in the buyback
- Xpro India Production suspended at Faridabad unit
- MCX & MSEI settle ongoing dispute over 41.5 crore warrants



NIFTY CHART



MARKET COMMENTARY

Wednesday's session was characterized by extreme volatility as the frontline indices went through a rollercoaster ride amid lack of direction ahead of August F&O expiry and signals on key policy rates from US Federal Reserve Chair Janet Yellen at a meeting scheduled this week. However, investors' morale remained upbeat on account of study progress of Goods and Services Tax (GST), which will be implemented from April 1, 2017. For today's trade Nifty likely to trade in the range between 8665 – 8685 in the upper side and 8635 – 8615 in the lower side.

MARKET LEVELS

	CMP	SUPPORT LEVELS				RESISTANCE LEVELS			
NIFTY	8650	8635	8615	8585	8555	8665	8685	8715	8735
USDINR	67.16	67.1	67	66.9	66.85	67.2	67.25	67.3	67.4



BULK DEALS (BSE)

SCRIP	CLIENT NAME	BUY/SELL	QUANTITY	PRICE
INTELLADV	OLUMPUS TRADING AND ADVISORY LLP	B	775,000	14.4
INTELLADV	SUNIL OPTICS PRIVATE LIMITED	S	775,000	14.4
KAPILCO	SANGAM ADVISORS LIMITED	S	5,500	145

BULK DEALS (NSE)

SCRIP	CLIENT NAME	BUY/SELL	QUANTITY	PRICE
TIMETECHNO	NTASIAN EMERGING LEADERS MASTER FUND	BUY	6142423	85.88
TIMETECHNO	BUSINESS EXCELLENCE TRUST INDIA BUSINE	SELL	3065010	85.89
TIMETECHNO	INDIA BUSINESS EXCELLENCE FUND I	SELL	2829550	85.91
SHARONBIO	COTHOLIC SYRIAN BANK	SELL	575000	9.8

SCRIP'S IN F&O BAN

(To resume for normal trading below 80% of market wide limit required)

IBREALEST, IDBI, INDIACEM, JINDALSTEL, JPASSOCIAT

Initial Public Offering (IPO)

Company Name	Security type	Issue Start Date	Issue End Date	Status
RBL Bank Ltd	Equity	19-Aug-2016	23-Aug-2016	Closed



NIFTY 50 STOCKS: SUPPORT & RESISTANCE						
Symbol	Close	Support 1	Support 2	Pivot Point	Resistance1	Resistance2
ACC	1647	1639	1630	1649	1657	1667
ADANI PORTS	270	268	266	271	273	276
AMBUJACEM	267	264	262	268	270	274
ASIANPAINT	1119	1113	1107	1122	1128	1136
AXISBANK	583	580	576	582	586	589
BAJAJ-AUTO	2870	2847	2824	2874	2897	2924
BANKBARODA	163	162	161	164	165	166
BHARTIARTL	353	349	345	354	357	362
BHEL	137	135	134	137	138	140
BOSCH LTD	23679	23386	23093	23593	23886	24093
BPCL	582	576	570	581	587	592
CAIRN	206	203	201	206	208	211
CIPLA	567	557	546	564	575	583
COALINDIA	334	332	330	334	336	339
DRREDDY	3040	3017	2994	3030	3053	3067
GAIL	366	364	362	366	368	370
GRASIM	4573	4512	4450	4557	4619	4664
HCLTECH	790	782	773	790	799	807
HDFC	1383	1370	1358	1379	1391	1399
HDFCBANK	1262	1251	1241	1258	1268	1275
HEROMOTOCO	3311	3288	3265	3308	3330	3350
HINDALCO	157	156	154	157	158	159
HINDUNILVR	919	910	901	918	927	934
ICICIBANK	248	247	245	249	251	253
IDEA	98	97	96	98	99	100
INDUSINDBK	1183	1177	1171	1185	1191	1199
INFY	1057	1049	1040	1055	1064	1071
ITC	250	249	248	250	252	253
KOTAKBANK	777	772	767	777	782	787
LT	1474	1463	1452	1476	1486	1499
LUPIN	1522	1501	1481	1526	1547	1571
M&M	1435	1428	1420	1440	1447	1459
MARUTI	4949	4895	4842	4940	4993	5037
NTPC	161	158	156	161	164	166
ONGC	241	239	237	241	243	245
PNB	126	125	124	127	128	129
POWERGRID	182	181	180	182	183	184
RELIANCE	1021	1014	1007	1018	1025	1029
SBIN	254	253	252	255	256	257
SUNPHARMA	770	764	758	770	776	781
TATAMOTORS	498	493	487	499	505	512
TATAPOWER	76	75	73	76	78	79
TATASTEEL	380	377	373	382	385	391
TCS	2572	2560	2548	2581	2593	2614
TECHM	467	463	459	467	471	476
ULTRACEMCO	3812	3788	3763	3819	3844	3875
VEDL	176	175	173	176	178	179
WIPRO	520	517	515	520	522	525
YESBANK	1338	1331	1324	1337	1344	1350
ZEEL	522	516	511	520	526	530



CORPORATE ACTION / BOARD MEETINGS

NSE Download Ref No :NSE/FAOP/32916:- Adjustment of Futures and Options contracts in the security HINDPETRO. The adjusted strike price shall be arrived at by dividing the old strike price by the adjustment factor i.e.3. The revised market lot would be 2100 w.e.f September 14, 2016

NSE Download Ref No. : NSE/CML/32942:- Face Value Split - PIL ITALICA LIFESTYLE LIMITED from Rs. 4 to Rs.1 w.e.f August 24, 2016

NSE Download Ref No. : NSE/CML/33032:- Face Value Split - V-Guard Industries Limited from Rs. 10 to Rs. 1 w.e.f. August 30, 2016

BOARD MEETINGS

COMPANY NAME	DATE	PURPOSE	RS. PER SH.
GNFC	25-Aug-16	Dividend	2
JAYBARMARU	25-Aug-16	Annual General Meeting / Dividend	2
JBMA	25-Aug-16	Annual General Meeting / Dividend	1.75
STRTECH	25-Aug-16	Annual General Meeting / Dividend	1
MAYURUNIQ	25-Aug-16	Dividend	0.25
RAIN	25-Aug-16	Dividend	1
GPTINFRA	25-Aug-16	Dividend	1
INDIANCARD	25-Aug-16	Dividend	10
VIMTALABS	25-Aug-16	Annual General Meeting / Dividend	1
JKTYRE	25-Aug-16	Annual General Meeting / Dividend	2.5
PFC	26-Aug-16	Bonus 1:1	
FINCABLES	26-Aug-16	Annual General Meeting / Dividend	2.5
BAYERCROP	29-Aug-16	Annual General Meeting / Dividend	17
MMFL	29-Aug-16	Annual General Meeting / Dividend	5
KEI	29-Aug-16	Annual General Meeting / Dividend	0.5
JKLAKSHMI	29-Aug-16	Annual General Meeting / Dividend	0.25
MENONBE	30-Aug-16	Bonus 1:5	
VGUARD	30-Aug-16	Face Value Split From Rs 10 To Re 1	
OFSS	30-Aug-16	Annual General Meeting / Dividend	100
PPAP	30-Aug-16	Annual General Meeting / Dividend	1
SHARDAMOTR	30-Aug-16	Annual General Meeting / Dividend	6.25
UBL	30-Aug-16	Annual General Meeting / Dividend	1.15

NEWS & RUMOURS:

- Gold (Spot Dollar) major support = \$1303/\$1285 & Resistance = \$1359/\$1393.
- Crude oil range->\$42 to \$52.
- U.S. stocks fall on downbeat data and earnings, oil slumps on stockpiles: - Wall Street moved slightly lower on Wednesday, as investors remained on edge ahead of the Federal Reserve's [Jackson Hole meeting](#) later this week and digested some downbeat data and earnings, while oil tumbled on bearish crude inventories. While market participants were busy taking positions ahead of [Federal Reserve Chief Janet Yellen's speech](#) at the Jackson Hole Economic Symposium on Friday and whether [the central bank chief could signal rate hike timing](#), they evaluated some worse than expected data on the U.S. housing market.
- Dollar index pushes higher despite U.S. home sales data: - The dollar pushed higher against the other major currencies on Wednesday, despite the release of weak U.S. existing home sales data as sentiment on the greenback continued to strengthen ahead of Federal Reserve Chair Janet Yellen's highly anticipated speech on Friday.
- U.S. natural gas rallies to fresh 2-week high ahead of storage data: - U.S. natural gas futures rose for the third day in a row on Wednesday, hitting a more than two-week high as market players looked ahead to fresh weekly information on U.S. gas inventories to gauge the strength of demand for the fuel.
- Oil down more than 2 percent after big U.S. crude stock build: - Oil prices extended their losses on Wednesday, with [U.S. crude](#) futures falling more than 2 percent, after an unexpected large build in U.S. crude stockpiles renewed worries about oversupply in the market...

TRENDS & OUTLOOK – DATE: 25- Aug- 2016

PRECIOUS METALS:

COMMDITY (MCX)	S2	S1	PIVOT POINT	R1	R2
GOLD (Oct)	30630	30870	31165	31375	31633
SILVER (Sep)	42100	43000	44100	45365	46500

BASE METALS

COMMDITY (MCX)	S2	S1	PIVOT POINT	R1	R2
COPPER (Aug)	299	304	311	315	320
ZINC (Aug)	148.30	150.60	153.25	155.55	158.20
LEAD (Aug)	119.10	121.50	124.20	126.30	129.40
NICKEL (Aug)	636	651	675	693	709

ENERGY

COMMDITY (MCX)	S2	S1	PIVOT POINT	R1	R2
CRUDE OIL (Sep)	2941	3031	3175	3265	3390
NATURAL GAS (Aug)	174	180	186	192	197

DATA TALKS : TODAY'S ECONOMIC DATA :

German Ifo Business Climate, Core Durable Goods Orders m/m, Unemployment Claims, Durable Goods Orders m/m, Flash Services PMI, Natural Gas Storage, Jackson Hole Symposium.



LET THE
**WOMAN
POWER RISE**

**WOMEN
DESK**

All the Ladies in the house are
cordially invited to come
& explore their trading talents.

TOLL FREE: 18001030059



Registered Office

Indira House, 3rd Floor, 5 Topiwala Lane,
Opp. Lemington Road Police Station, Grant Road (East), Mumbai - 400007.

Corporate Office

'Ramavat House' E-15, Saket Nagar, Indore - 452018 (M.P.)

Customer Care

Tel: +91-731-4097170/ 71/ 72/ 73/ 74 M. +91 93031 72345

Email: customercare@indiratrade.com www.indiratrade.com



INSTITUTIONAL DEALING UNIT

Africa House, 5, Topiwalla Lane, Lamington Road, Mumbai, 400007

Tel: +91 22 30080678 Fax : +91 22 23870767 Email : ie@indiratrade.com

Disclaimer

This report is for private circulation within the Indira Group. This report is strictly confidential and for information of the selected recipient only and may not be altered in any way, transmitted to, copied or distributed, in part or in whole, to any other person or to the media or reproduced in any form. This report should not be construed as an offer or solicitation to buy or sell any securities or any interest in securities. It does not constitute a personal recommendation or take into account the particular investment objectives, financial situations, or any such factor. The information, opinions estimates and forecasts contained here have been obtained from, or are based upon, sources we believe to be reliable, but no representation of warranty, express or implied, is made by us to their accuracy or completeness. Opinions expressed are our current opinions as of the date appearing on this material only and are subject to change without notice.